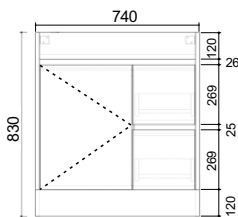


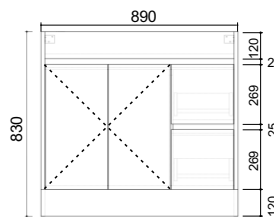
**LOGAN60**



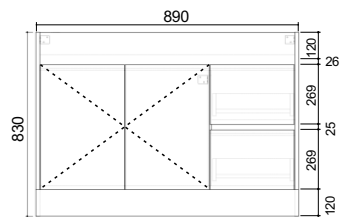
**Side View**



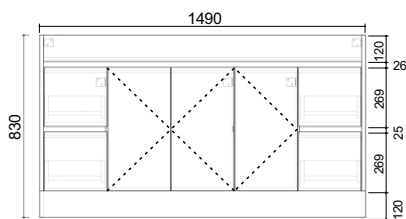
**LOGAN75**



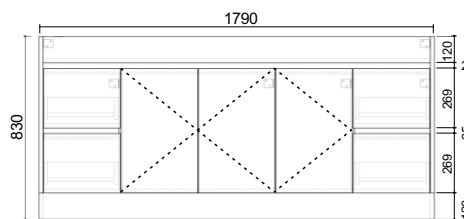
**LOGAN90**



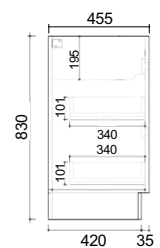
**LOGAN120**



**LOGAN150**



**LOGAN180**



**Side View**

## FEATURES

- Pre assembled cabinets, ready for installation.
- Moisture resistant 16mm melamine and 18mm MDF.
- Drawer organisers in top drawer.
- DTC premium soft close runners.
- Ultra hard wearing surface that will easily dent or chip.
- Finger pull
- Caribbean oak grey

arova<sup>®</sup>

With our policy of continuous improvement, we reserve the right to change or discontinue at any time, specifications or designs without notice. Please confirm all particulars before purchase and have the product at site before rough in. To the extent permitted by law, Arova is not liable for any errors, omissions or misrepresentations of information or for any loss or damage suffered by persons who use or rely on such information.

[www.arova.com.au](http://www.arova.com.au)